



PHONE

(301) 649-2389

FAX

(301) 649-0704

E-MAIL

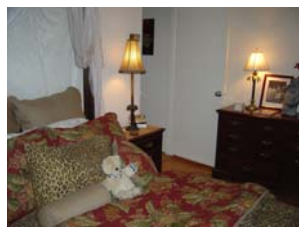
admin@justlikehome.com

WEBSITE

www.justlikehome.com

APARTMENT AMENITIES

- Two bedrooms
- Fully equipped kitchen
- Unlimited local calls
- Utilities included
- High speed internet access
- Alarm clock and radio
- Telephone w/ voicemail
- Iron and ironing board
- Large work space
- Color, cable TV w/cable
- Towels and linens



BUILDING AMENITIES

- 24-hour front desk
- Valet parking
- Swimming pool
- Fitness Center
- Sauna
- Internet Cafes
- Library
- Coffee Service w/cookies



*“Accommodations that remind
you of home.”*

The Neighborhood – Forest Hills (VanNess)

The Van Ness North is in the Forest Hills neighborhood of northwest Washington, D.C. Forest Hills extends along both sides of Connecticut Avenue, between the neighborhoods of Cleveland Park and Chevy Chase. The stretch of Connecticut Avenue running north from the Cleveland Park metro station features some of Washington's finest apartment houses from the 1920's, such as the Broadmoor and Tilden Gardens, along with more recent structures such as the Van Ness complex. Retail use is clustered at the Cleveland Park and Van Ness metro stations, and on a stretch just south of Chevy Chase Circle. Forest Hills features a variety of cuisines from around the world as well as interesting local shops. The residential streets in the southern end of the neighborhood feature some of the finest examples of town houses in Washington, while spacious single family detached homes fill the northern end of Forest Hills. Just north of the Van Ness complex, across the arm of Rock Creek Park known as Soapstone Valley, is a forested enclave with many architecturally distinctive homes.